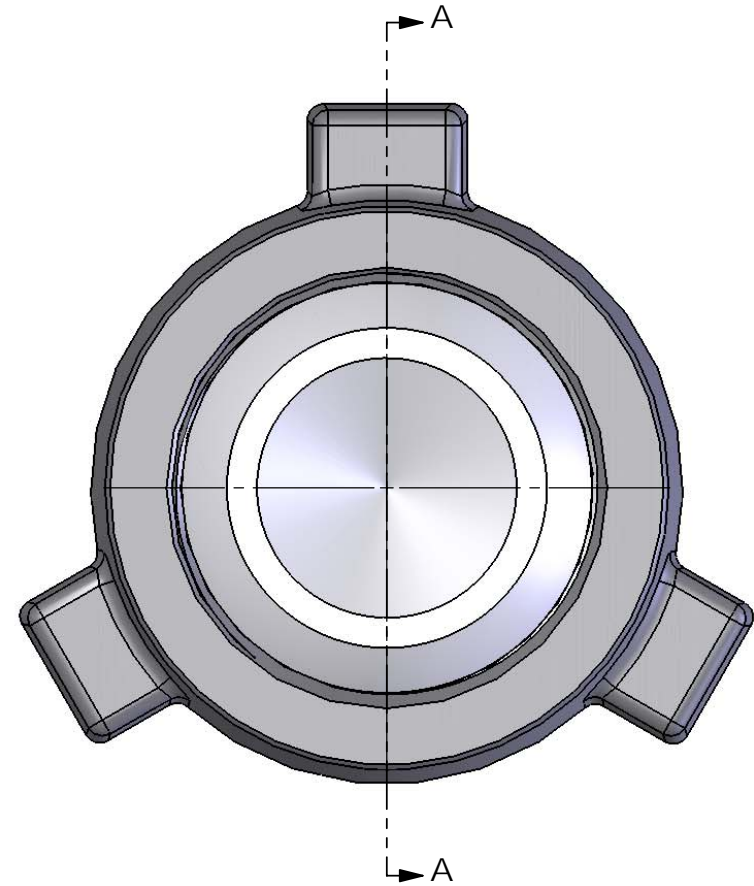
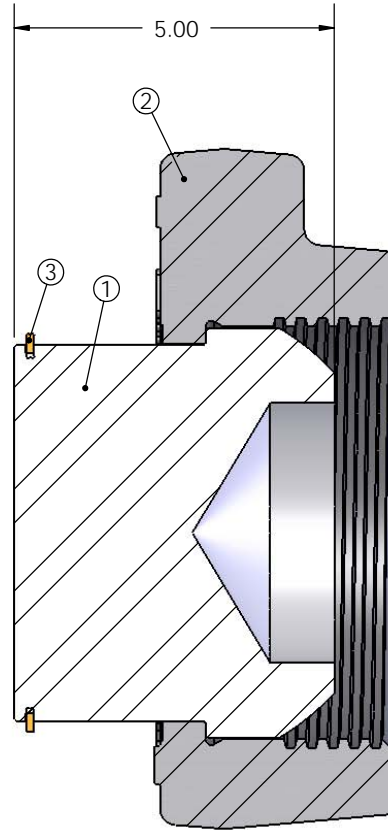
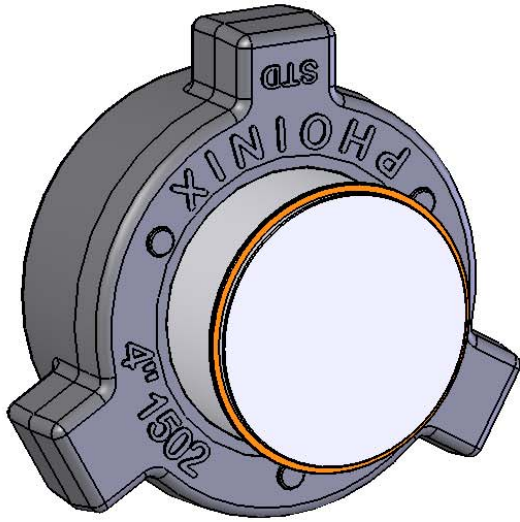


ITEM NO.	PART NUMBER	DESCRIPTION	QTY.
1	BB4CM-S01	BLANK BODY, 4"1502 MALE STD 15K	1
2	UWN-4C-D-S	WINGNUT, 4"1502 STD 15K DETACHABLE	1
3	URRB4	RETAINER RING, 4"1002	1



SECTION A-A  
SCALE 1 : 3



DRAWING STANDARDS:

DIMENSION UNITS ARE INCHES

1. ALL CORNER RADII R0.30
2. BREAK ALL EDGES 0.015 X 45° OR R.015
3. HIGBEE ALL ACME THREADS TO FULL WIDTH
4. REFERENCE DIMENSIONS ARE IN PARENTHESIS
5. MACHINED SURFACES ARE 125 Ra
6. ALL DIAMETERS CONCENTRIC AND ROUND TO ± 0.005
7. TOLERANCES: .XX ±0.015 <math>\leq \pm 0.5^\circ</math>  
.XXX ±0.005

<math>\leq \pm 0.5^\circ</math>

○ ROUNDNESS

◎ CONCENTRICITY

⊘ CYLINDRICITY

▭ FLATNESS

// PARALLELISM

⊥ PERPENDICULARITY

↗ RUNOUT

⊥ COUNTERBORE

∨ COUNTERSINK

TOLERANCES: .XX ±0.015  
.XXX ±0.005  
<math>\leq \pm 0.5^\circ</math>  
UNLESS OTHERWISE STATED

ECN NO:

CHANGES INCLUDE:

ECN DATE:

MATERIAL SPEC:

RAW MATERIAL DESC:

WEIGHT: 74.17

TITLE: BLANK ASSY, 4"1502 MALE STD 15K

DWG NO. BA4CM-S01

DRAWN BY: SR

CHK'D: JF

APP'V'D: KB

REVISION:

0

DATE:

7/30/2008

SHEET 1 OF 1

DO NOT SCALE DRAWING

THIS DRAWING IS PROPRIETARY AND CONFIDENTIAL PROPERTY. THIS DOCUMENT CANNOT BE REPRODUCED OR DISTRIBUTED WITHOUT THE WRITTEN CONSENT OF PHOENIX GLOBAL LLC.